





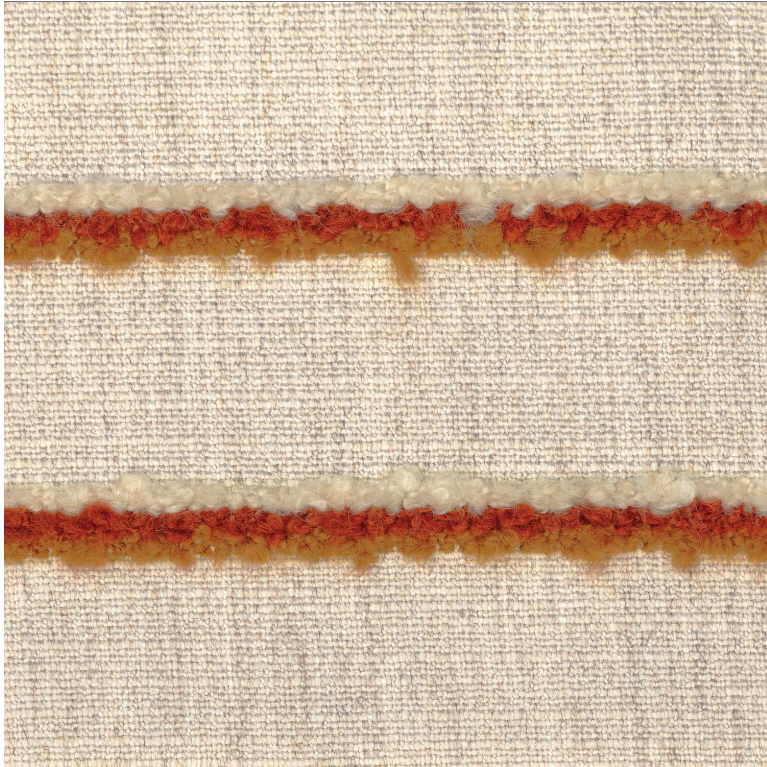


Limonata

Tissus MISIA

Collection	CAPRISSIMA
Référence	M482501
Composition	18 % wv ; 33 % vi ; 12 % co ; 11 % li ; 23 % pc ; 2 % pes ; 1 % pa - -
Laize utile	135 cm / 53 Inches
Raccord	Raccord droit
Test Martindale	40000
Usage martindale	Siège à usage intensif : >40,000 cycles (Martindale) et/ou >30,000 doubles rubs (Wyzenbeek)
Wyzenbeek	100000
Sens	De large
Poids g/m ²	865
Performance Accoustique	aw - 0.15
Usage	 
Entretien	   
Pays d'origine	Belgique
Rapport Vertical	9 cm / 4 Inches



2 déclinaisons

