

# Bath

## Fabrics CAMENGO

*Collection* [BATH](#)

*Reference* 52510736

*Composition* 100 % pes recycled - --

*Useful width* 295 cm / 116 Inches

*Shrinkage* <2%

*Match* Free match

*Pattern direction* Non-railroaded

*Weight in g/m<sup>2</sup>* 500

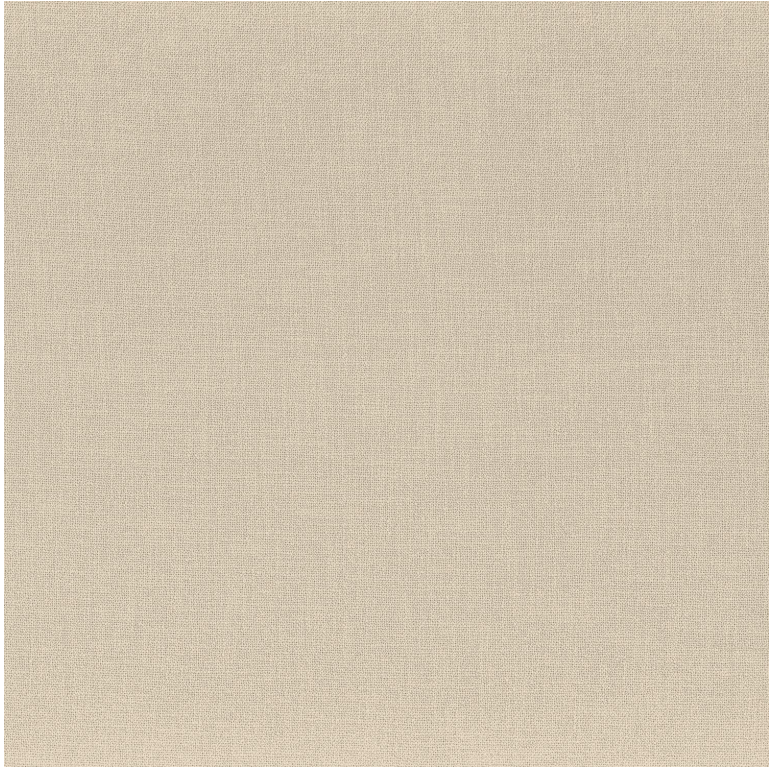
*Use* 

*Care* 

*Country of origin* India

*Features*

*Confection tips* Fabrics can be turned for continious confection with visual aspect change



23 variations

