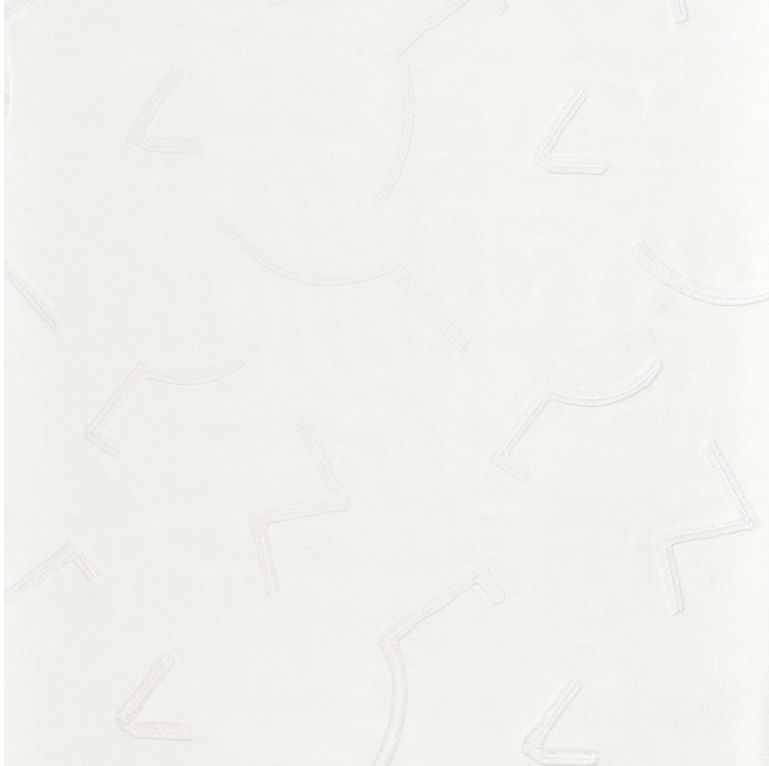


Isor

Fabrics CAMENGO



Collection

[LUMATERRA](#)

Reference

52050192

Composition

51 % pes ; 49 % co organic - cotton embroidery

Useful width

288 cm / 113 Inches

Shrinkage

<1%

Match

Straight match

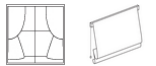
Pattern direction

Railroaded

Weight in g/m²

145

Use



Care



Country of origin

India

Horizontal repeat

32 cm / 13 Inches

Vertical repeat

48 cm / 19 Inches

Confection tips

Fabrics can be turned for continuous confection with visual aspect change

1 variation

