

Bruma

Fabrics CAMENGO

Collection

[LUMATERRA](#)

Reference

52040216

Composition

64 % pes ; 24 % li ; 12 % vi - - -

Useful width

297 cm / 117 Inches

Shrinkage

<1%

Match

Straight match

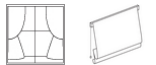
Pattern direction

Railroaded

Weight in g/m²

110

Use



Care



Country of origin

Turkey

Horizontal repeat

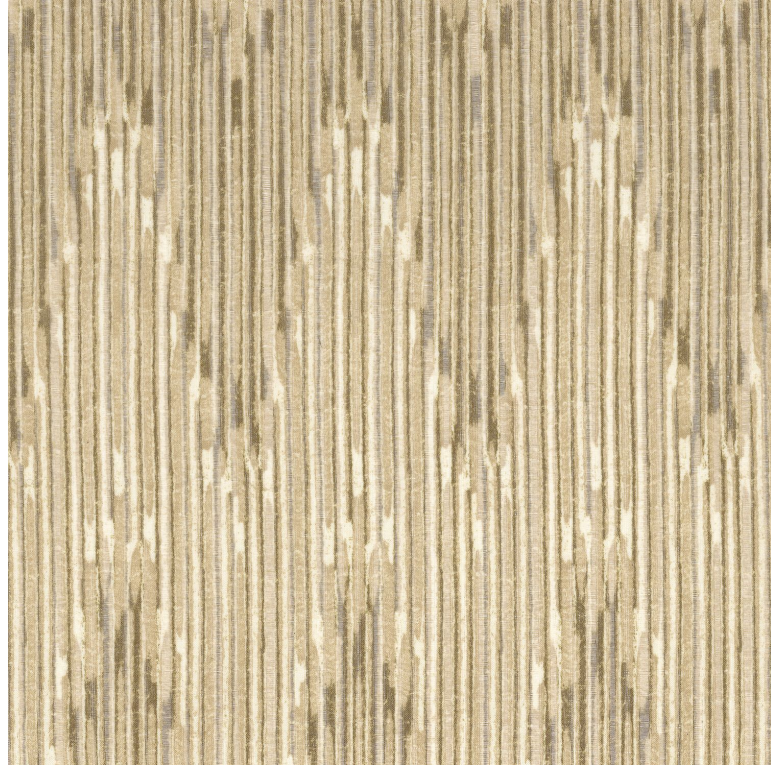
125 cm / 49 Inches

Vertical repeat

50 cm / 20 Inches

Confection tips

Fabrics can be turned for continuous confection with visual aspect change



4 variations

