

# Propolis wall

Wallcovering MISIA

*Commercial description*

Animal drawing woven on non-woven

*Collection*

[BELLISSIMA](#)

*Reference*

M535502

*Composition*

44 % pes ; 28 % li ; 28 % vi - -

*Width*

142 cm / 56 Inches

*Height*

Sold by meter

*Weight in g/m²*

480

*Care*

Spongeable

*Apply paste*

Paste the wall

*Removal*

Dry strip

*Norme COV*

A+

*ASTME84*

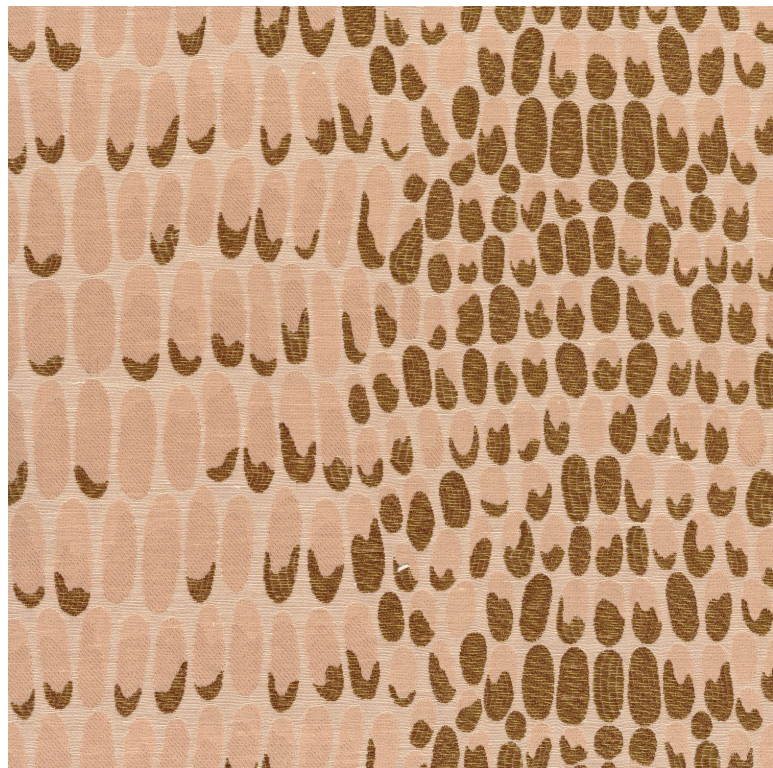
Class A

*European fire-rating*

B s1 d0

*Country of origin*

Italy



### 3 variations

