

# Trim

## Fabrics CAMENGO

Collection [OSMOZ](#)

Reference 49880123

Composition 59 % pes ; 25 % co ; 16 % li - broderie coton lin polyester et viscose

Useful width 300 cm / 118 Inches


Shrinkage <3%

Match Straight match

Pattern direction Railroaded

Weight in g/m<sup>2</sup> 320

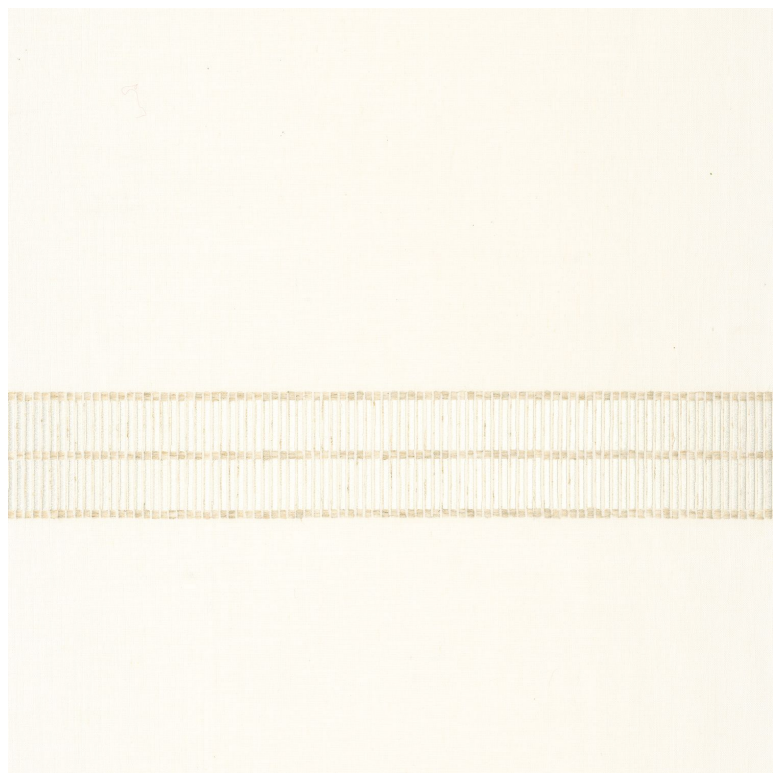
Use 

Care 

Country of origin India

Vertical repeat 300 cm / 118 Inches

Confection Fabrics can be turned for continuous confection with visual aspect change. the lined effect will be vertical and not horizontal



## 1 variation

