

# Zenon

Fabrics CAMENGO

Collection

[MOON SHEERS](#)

Reference

48840226

Composition

60 % co ; 40 % pes - broderie coton et viscose

Useful width

280 cm / 110 Inches

Shrinkage

<1%

Match

Straight match

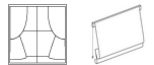
Pattern direction

Railroaded

Weight in g/m<sup>2</sup>

120

Use



Care



Country of origin

India

Horizontal repeat

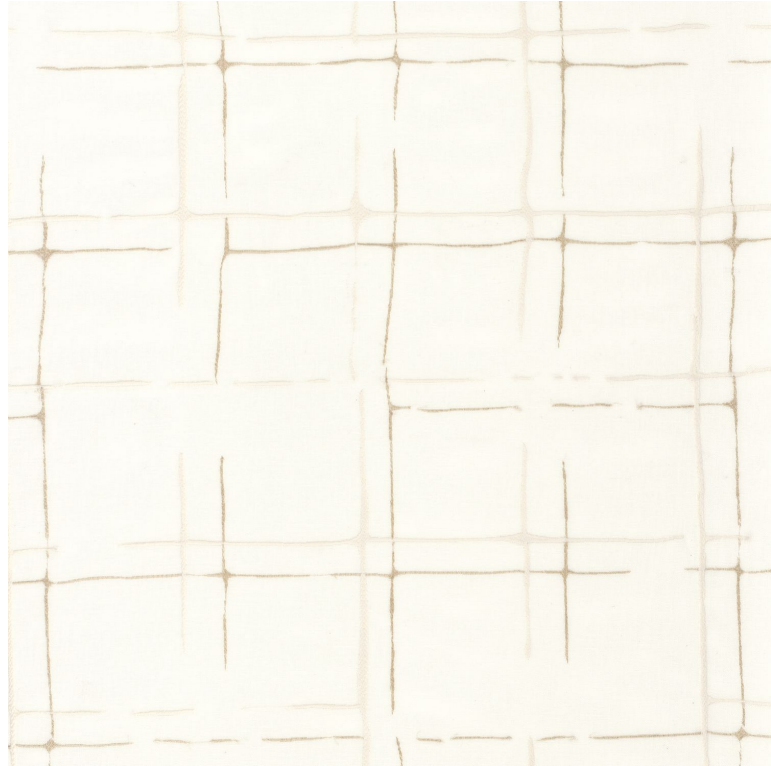
47 cm / 19 Inches

Vertical repeat

70 cm / 28 Inches

Confection tips

Fabrics can be turned for continuous confection with visual aspect change



**4 variations**

