

Luminara sheer

Fabrics CAMENGO

Collection

[MOON SHEERS](#)

Reference

48540187

Composition

60 % co ; 40 % pes - broderie viscose

Useful width

288 cm / 113 Inches

Shrinkage

<1%

Match

Straight match

Pattern direction

Railroaded

Weight in g/m²

130

Use



Care



Country of origin

India

Horizontal repeat

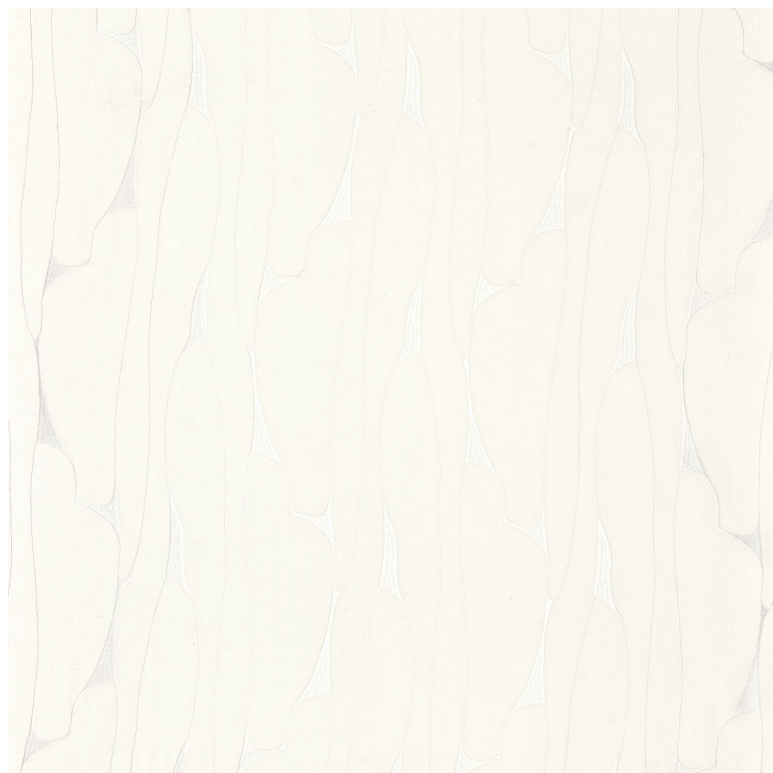
16 cm / 6 Inches

Vertical repeat

36 cm / 14 Inches

Confection tips

Fabrics can be turned for continuous confection with visual aspect change



4 variations

