

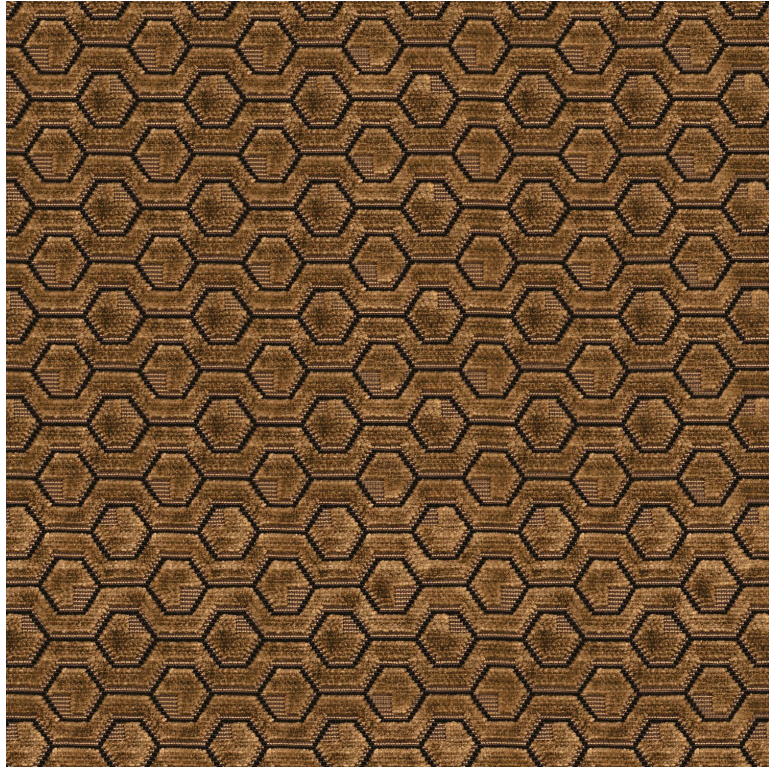


# CASAMANCE

## Mayfair

### Fabrics CASAMANCE

<i>Collection</i>	<a href="#">MAYFAIR</a>
<i>Reference</i>	46650491
<i>Colors</i>	Mordore
<i>Composition</i>	76 % vi ; 19 % pes ; 5 % co
<i>Useful width</i>	140 cm / 55 Inches
<i>Match</i>	Straight match
<i>Martindale</i>	40000
<i>Wear test (Wyzenbeek)</i>	40000
<i>Material use</i>	Medium duty upholstery : Between 20 000 and 40 000 cycles (Martindale) and between 15,000 and 30,000 double rubs (Wyzenbeek)
<i>Wyzenbeek</i>	40000
<i>Pattern direction</i>	Non-railroaded
<i>Weight in g/m<sup>2</sup></i>	765
<i>Use</i>	
<i>Care</i>	
<i>Country of origin</i>	Belgium
<i>Horizontal repeat</i>	5 cm / 2 Inches
<i>Vertical repeat</i>	5 cm / 2 Inches



**6 variations**

