

# Esprit

## Fabrics CAMENGO

*Collection* [ESPRIT 3](#), [NATURELLEMENT](#), [ESPRIT LIBRE](#)

*Reference* CAMENGO-3315

*Composition* 100 % pes

*Useful width* 287 cm / 113 Inches

*Match* Free match

*Martindale* 40000

*Martindale use* Upholstery : superior or equal to 40 000 cycles (Martindale) and superior or equal to 30,000 double rubs (Wyzenbeek)

*Pattern direction* Non-railroaded

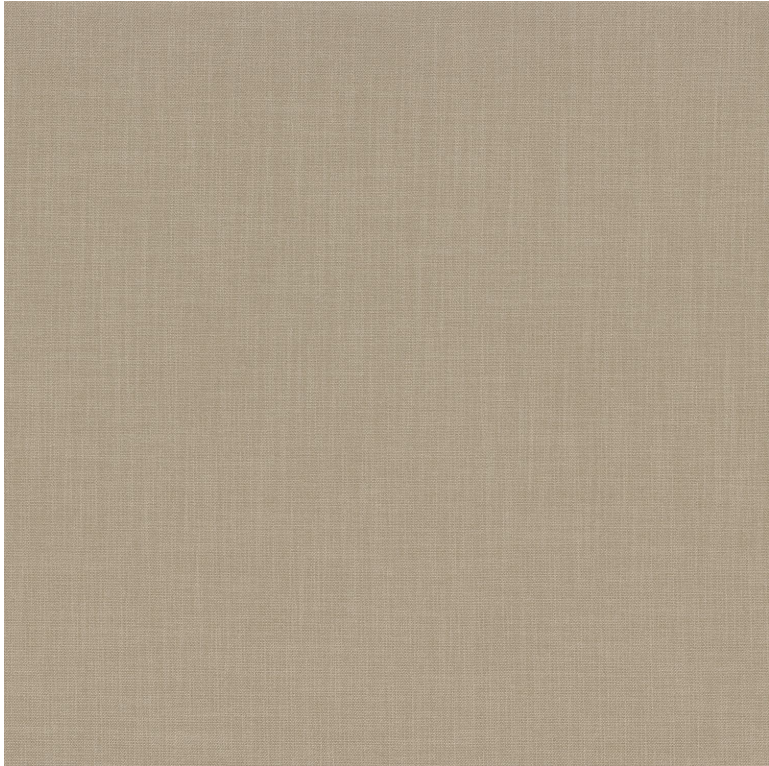
*Weight in g/m<sup>2</sup>* 310

*Use* 

*Care* 

*Country of origin* India

*Confection tips* Fabrics can be turned for continuous confection



19 variations

