

Anémone

Fabrics CAMENGO

Collection [ANEMONE](#)

Reference 50111947

Composition 53 % pes recycled ; 47 % pes

Useful width 298 cm / 117 Inches


Shrinkage <1%

Match Free match

Pattern direction Non-railroaded

Weight in g/m² 400

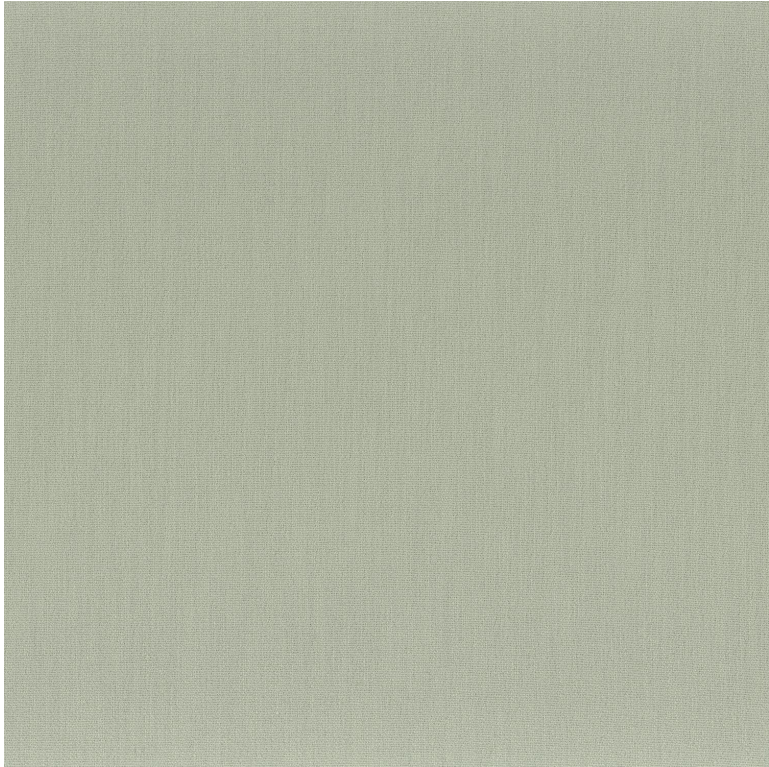
Performance Accoustique aw - 0.15

Use 

Care 

Country of origin India

Features



26 variations

