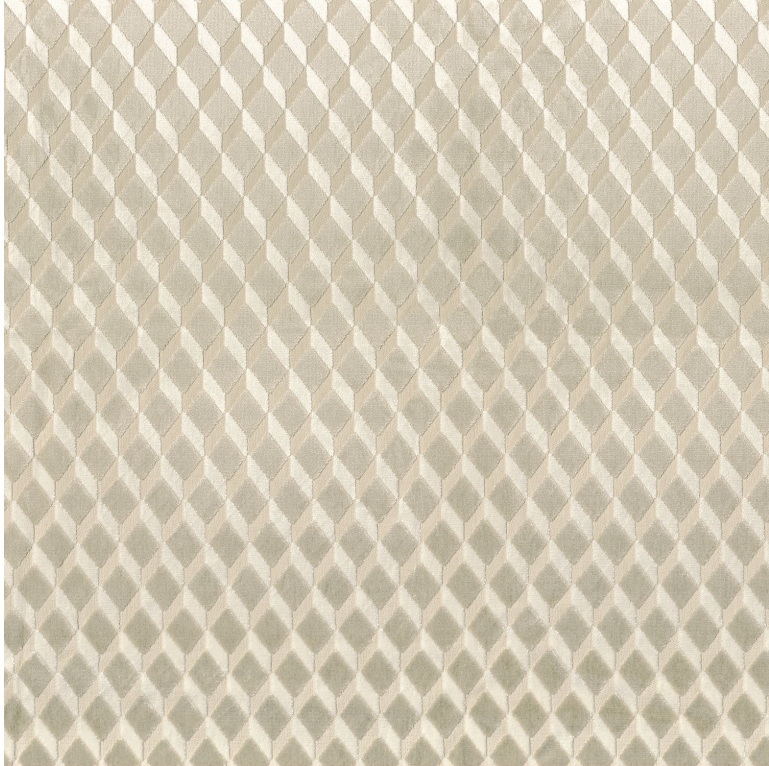


# District

Fabrics CAMENGO



*Collection* [RAINBOW 4](#)

*Reference* A44930145

*Composition* 75 % vi ; 25 % pes

*Useful width* 140 cm / 55 Inches

*Match* Straight match

*Martindale* 30000

*Martindale upholstery* : Between 20 000 and 40 000 cycles (Martindale) and between 15,000 and 30,000 double rubs (Wyzenbeek)

*Pattern direction* Non-railroaded

*Weight in g/m<sup>2</sup>* 586

*Performance Accoustique* aw - 0.15

*Use* 

*Care* 

*Country of origin* Belgium

*Horizontal repeat* 7 cm / 3 Inches

*Vertical repeat* 3 cm / 1 Inches

**5 variations**

