

Estèque

Fabrics CAMENGO

Collection [KAOLIN](#)

Reference 33880105

Composition 60 % co ; 40 % pes - cotton embroidery

Useful width 288 cm / 113 Inches


Shrinkage <3%

Match Straight match

Pattern direction Non-railroaded

Weight in g/m² 120

Use 

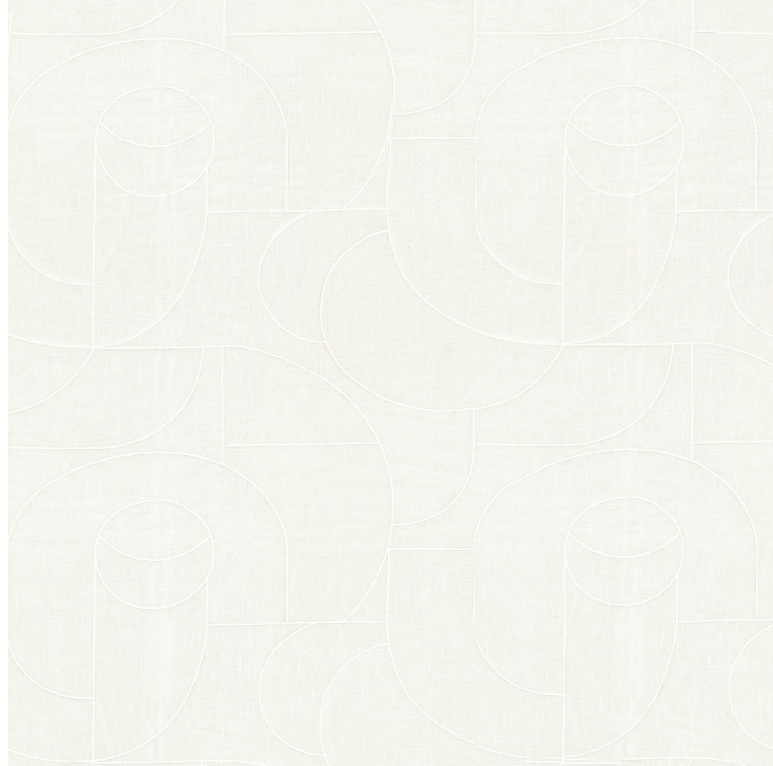
Care     

Country of origin India

Horizontal repeat 36 cm / 14 Inches

Vertical repeat 32 cm / 13 Inches

Confection tips Fabrics can be turned for continuous confection with visual aspect change



2 variations

