

# Milford

## Fabrics CAMENGO

*Collection* [MILFORD](#)

*Reference* 31291506

*Composition* 100 % pes recycled

*Useful width* 300 cm / 118 Inches

*Match* Straight match

*Martindale* 20000

*Martindale* upholstery : Between 20 000 and 40 000 cycles (Martindale) and between 15,000 and 30,000 double rubs (Wyzenbeek)

*Pattern direction* Railroaded

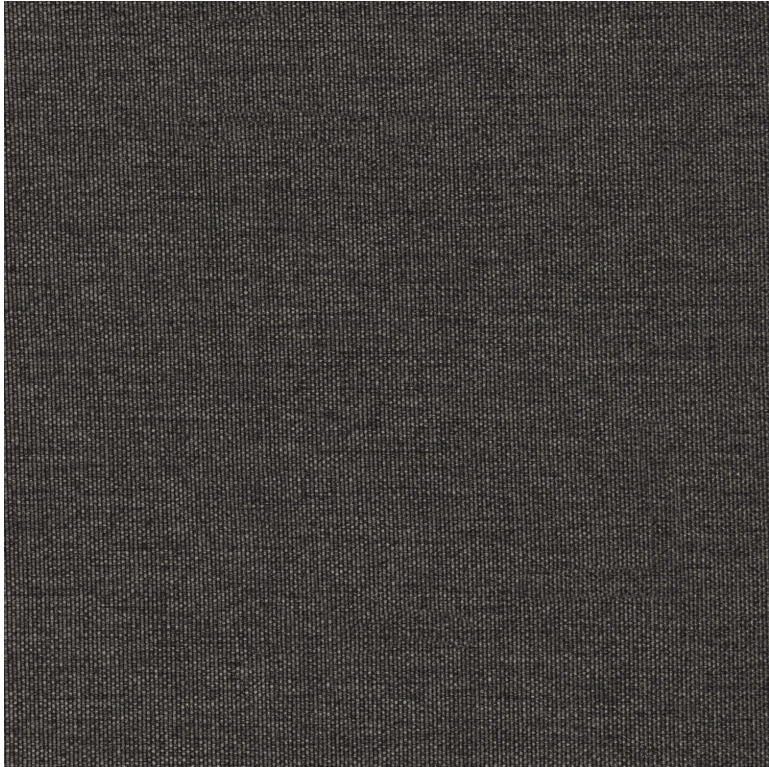
*Weight in g/m<sup>2</sup>* 350

*Performance Accoustique* aw - 0.15

*Use* 

*Care* 

*Country of origin* China



29 variations

