

Cosmopolite

Fabrics CAMENGO

Collection [BILBAO](#), [RAINBOW 4](#)

Reference A30570443

Composition 62 % co ; 20 % pes ; 18 % pa

Useful width 138 cm / 54 Inches

Match Straight match

Martindale 30000

Martindale upholstery : Between 20 000 and 40 000 cycles (Martindale) and between 15,000 and 30,000 double rubs (Wyzenbeek)

Wyzenbeek 25000

Pattern direction Non-railroaded

Weight in g/m² 430

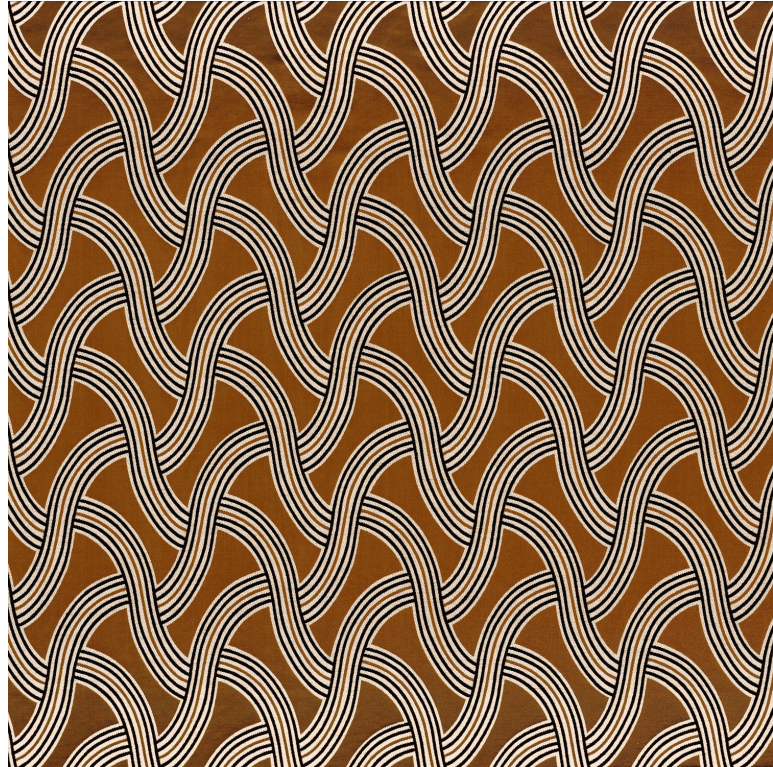
Performance Accoustique aw - 0.15

Use 

Care 

Country of origin India

Horizontal repeat 12 cm / 5 Inches



Vertical repeat

11 cm / 4 Inches

Confection tips

For the upholstery oversew and use a tape/the fabric falls on the floor when making into curtains

5 variations

