

CASAMANCE

Dual

Fabrics CASAMANCE

Collection

[RITOURNELLE](#)

Reference

48250884

Composition

65 % pa ; 24 % li ; 11 % pes

Useful width

141 cm / 56 Inches

Match

Straight match

Martindale

50000

Martindale Use Upholstery : superior or equal to 40 000 cycles (Martindale) and superior or equal to 30,000 double rubs (Wyzenbeek)

Wyzenbeek

50000

Pattern direction

Non-railroaded

Weight in g/m²

234

Performance Accoustique

aw - 0.15

Use



Care



Country of origin

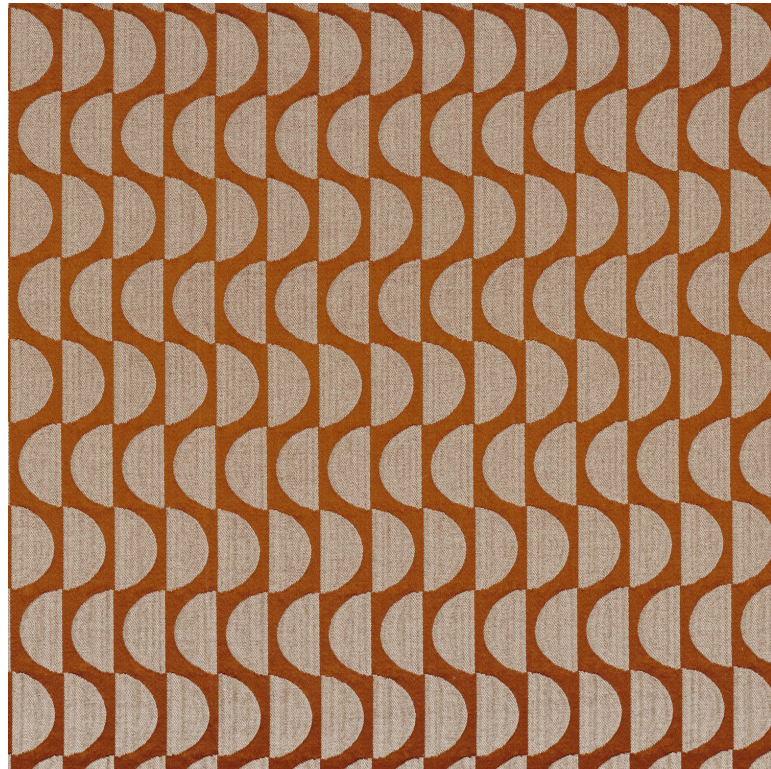
India

Horizontal repeat

3 cm / 1 Inches

Vertical repeat

9 cm / 4 Inches



Features

Confection tips

For the upholstery oversew and use a tape/the fabric falls on the floor when making into curtains

8 variations

