

CASAMANCE

Betta

Fabrics CASAMANCE

Collection

[ANTHOLOGIE](#), [UKIYO](#), [PONT NEUF](#)

Reference

B48200865

Composition

55 % li ; 25 % pa ; 20 % pes

Useful width

141 cm / 56 Inches

Match

Straight match

Martindale

30000

Martindale upholstery : Between 20 000 and 40 000 cycles (Martindale) and between 15,000 and 30,000 double rubs (Wyzenbeek)

Wyzenbeek

45000

Pattern direction

Non-railroaded

Weight in g/m²

350

Use



Care



Country of origin

India

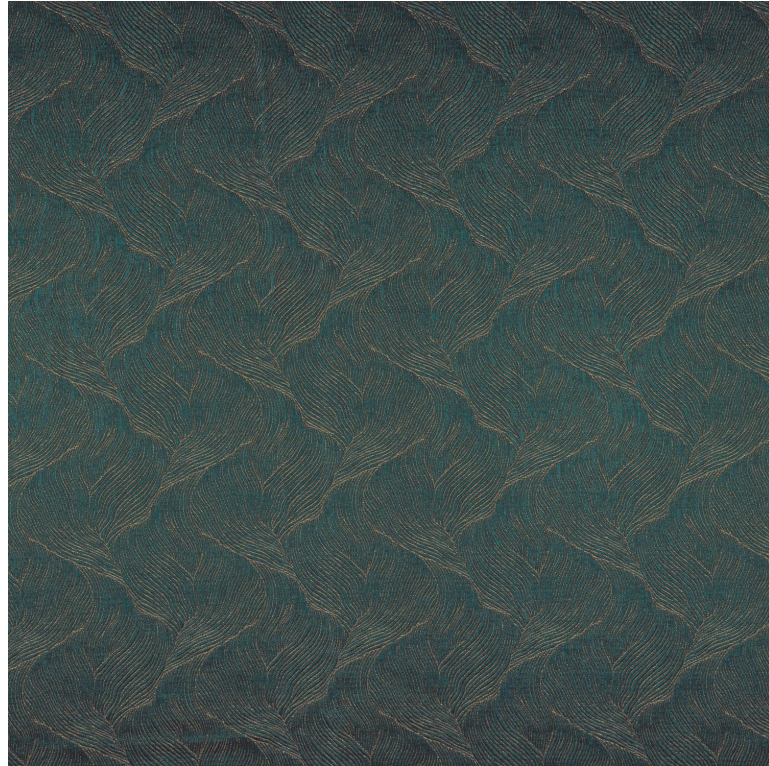
Horizontal repeat

24 cm / 9 Inches

Vertical repeat

12 cm / 5 Inches

Features



24 variations

