

# CASAMANCE

## Desert

### Fabrics CASAMANCE

Collection

[FLORILEGE](#), [DESERT](#)

Reference

47381002

Composition

39 % vi ; 34 % li ; 12 % co ; 11 % pes ; 4 % pc

Useful width

138 cm / 54 Inches

Match

Free match

Martindale

30000

Martindale upholstery : Between 20 000 and 40 000 cycles (Martindale) and between 15,000 and 30,000 double rubs (Wyzenbeek)

Wyzenbeek

35000

Pattern direction

Non-railroaded

Weight in g/m<sup>2</sup>

660

Performance Accoustique

aw - 0.15

Use



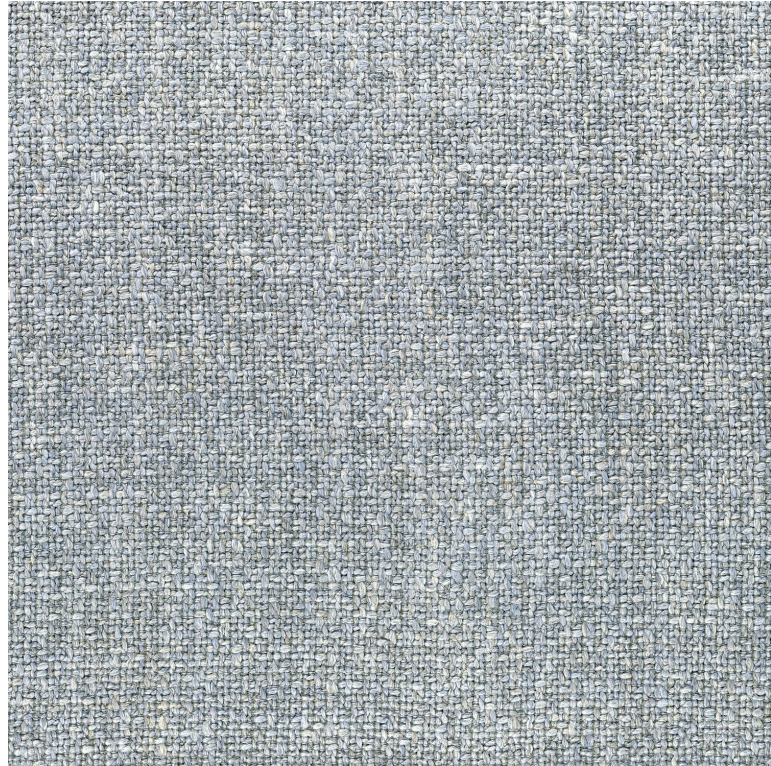
Care



Country of origin

Italy

Features



**12 variations**

