

CASAMANCE

Lumineuse

Fabrics CASAMANCE

Collection

[L'HEURE BLEUE](#)

Reference

42500465

Colors

Beige taupe

Composition

66 % pes ; 19 % vi ; 15 % co

Useful width

150 cm / 59 Inches

Shrinkage

<2%

Match

Free match

Martindale

30000

Martindale upholstery : Between 20 000 and 40 000 cycles (Martindale) and between 15,000 and 30,000 double rubs (Wyzenbeek)

Wyzenbeek

75000

Weight in g/m²

500

Use

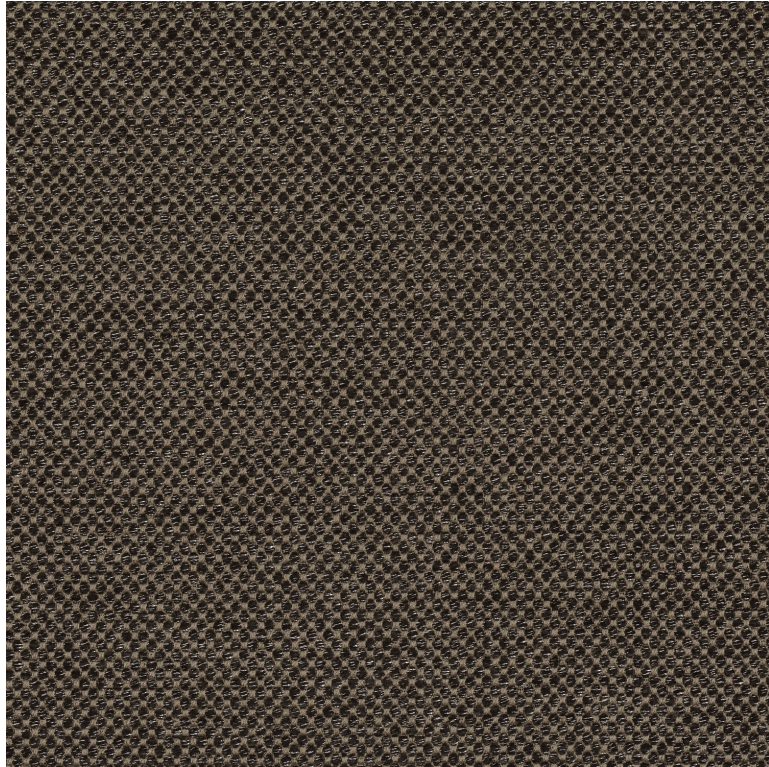


Care



Country of origin

Italy



10 variations

