






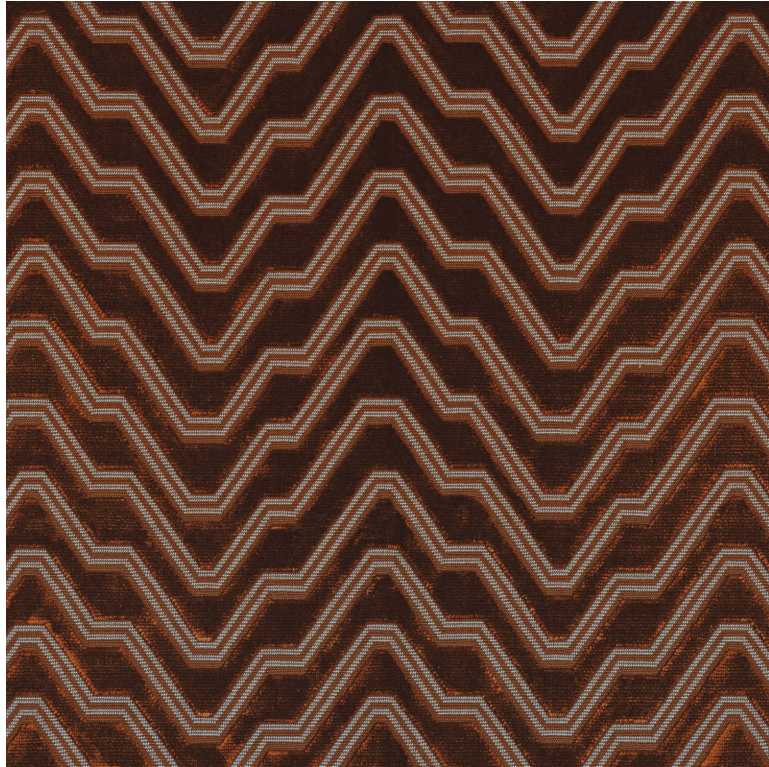


CASAMANCE

Chanut

Fabrics CASAMANCE

<i>Collection</i>	GALERIE
<i>Reference</i>	41440453
<i>Composition</i>	76 % vi ; 19 % pes ; 5 % co
<i>Useful width</i>	140 cm / 55 Inches
<i>Match</i>	Straight match
<i>Martindale</i>	40000
<i>Martindale use (Wyzenbeek)</i>	High quality Upholstery : superior or equal to 40 000 cycles (Martindale) and superior or equal to 30,000 double rubs (Wyzenbeek)
<i>Wyzenbeek</i>	100000
<i>Pattern direction</i>	Non-railroaded
<i>Weight in g/m²</i>	777
<i>Performance Accoustique</i>	aw - 0.15
<i>Use</i>	 
<i>Care</i>	    
<i>Country of origin</i>	Belgium
<i>Horizontal repeat</i>	18 cm / 7 Inches
<i>Vertical repeat</i>	22 cm / 9 Inches



5 variations

