

# CASAMANCE

## Marbre

### Fabrics CASAMANCE

Collection

[MEDICIS](#), [MAYFAIR](#)

Reference

CASAMANCE-3511

Composition

50 % co ; 25 % pc ; 15 % pa ; 10 % pes

Useful width

140 cm / 55 Inches

Match

Straight match

Martindale

50000

Martindale use Upholstery : superior or equal to 40 000 cycles (Martindale) and superior or equal to 30,000 double rubs (Wyzenbeek)

Wyzenbeek

100000

Weight in g/m<sup>2</sup>

500

Use

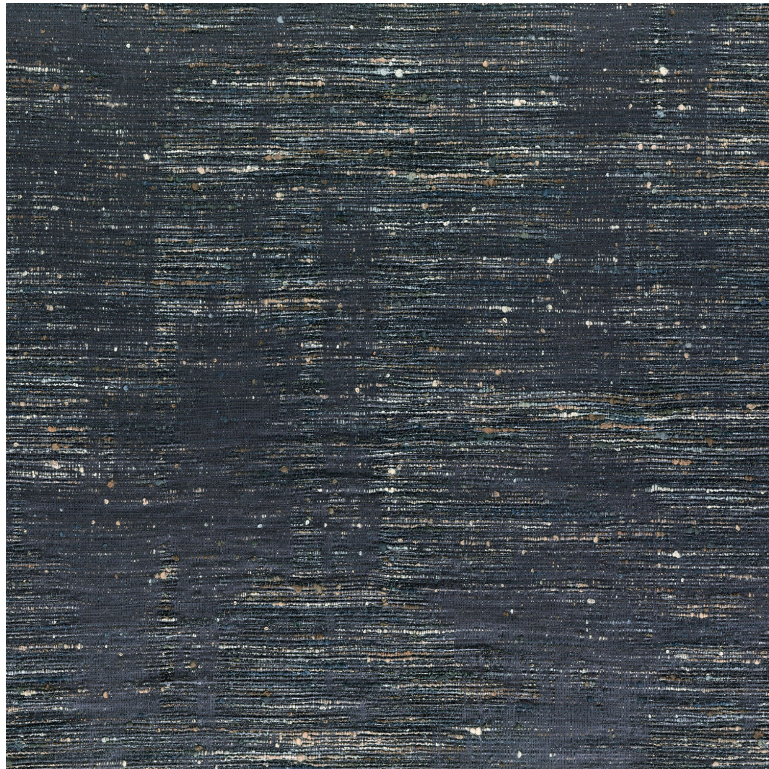


Care



Country of origin

Italy



11 variations

