

# CASAMANCE

## Facetie

### Fabrics CASAMANCE

Collection

[PORTE DES LILAS](#), [MANIFESTO](#)

Reference

A32320132

Composition

50 % vi ; 33 % pa ; 17 % co

Useful width

136 cm / 54 Inches

Match

Straight match

Martindale

40000

Martindale upholstery : Between 20 000 and 40 000 cycles (Martindale) and between 15,000 and 30,000 double rubs (Wyzenbeek)

Wyzenbeek

100000

Pattern direction

Non-railroaded

Weight in g/m<sup>2</sup>

398

Performance Accoustique

aw - 0.15

Use



Care



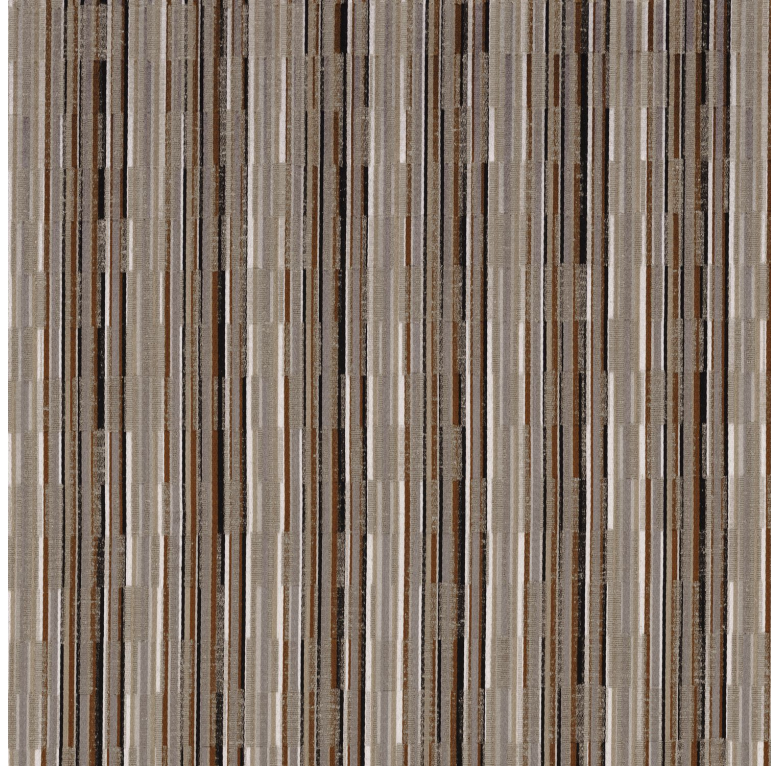
Country of origin

India

Horizontal repeat

34 cm / 13 Inches

Features



**4 variations**

