

# Salvador de bahia

Fabrics MISIA

Collection

Reference

Colors

Cuivre

Composition

73 % wo ; 24 % vi ; 3 % pc

Useful width

137 cm / 54 Inches

Match

Free match

Martindale

40000

Martindale Use Upholstery : superior or equal to 40 000 cycles (Martindale) and superior or equal to 30,000 double rubs (Wyzenbeek)

Wyzenbeek

50000

Pattern direction

Non-railroaded

Weight in g/m<sup>2</sup>

562

Use

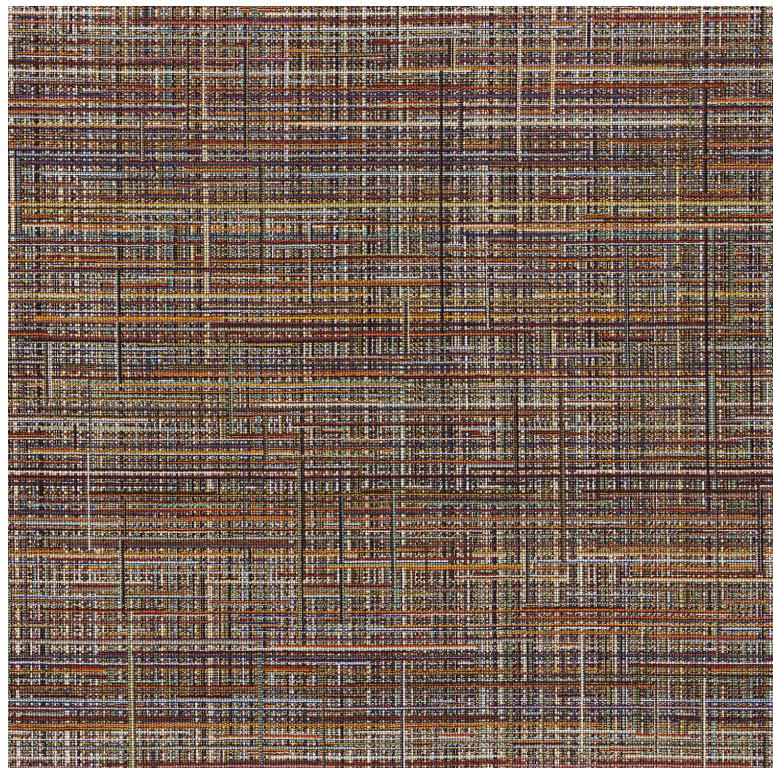


Care



Country of origin

France



**0 variation**