



CONCH

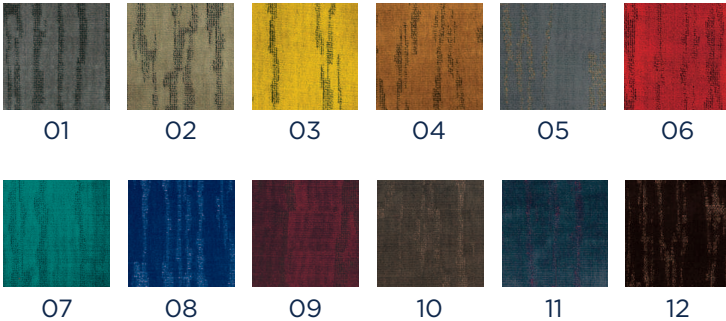
M113 9 06

Color : 06 - Rubis

« Conch » est un velours jacquard dont la composition, en coton et viscose, lui octroie brillance naturelle et toucher satiné. Le fil de chenille en trame, tissé sur une base de couleur différente, révèle un motif aux épais sillons colorés, comme les veinures d'un bois ; créant ainsi profondeur et effet de texture.

«Conch» is a jacquard velvet whose composition, in cotton and viscose, gives it a natural shine and a satin feel. The chenille weft yarn is woven on a different color background, revealing the design in the form of thick colorful grooves, like the veins in a piece of wood, and creating depth and texture.

Available colorways :



Composition : 56% VI, 44% CO

Width : 54 1/4" (W) - 138 cm

Weight : +/- 580g/m² (20.5 oz/sq.yd)

Country : India



Professional cleaning recommended

STANDARD USED Test standard	FR	UK			IT		EU			USA		IMO	
M113	NF P92 507 (2004)	BS 5867 Part 2 (Type B) (2008) - Drapery	BS 5852 Part 1 (1979) - Upholstery	BS 5852 Crib 5 (2006) - Upholstery	C1 - UNI 9177 - Drapery	C1 - UNI 9175 - Upholstery	EN 13773 (2003) - Drapery	EN 1021-1 (2006) - Upholstery	EN 1021-2 (2006) - Upholstery	NFPA 701 (2010) - Drapery	NFPA 260 (2009) - Upholstery	IMO-2010 FTP Code Annex 1 - Fire test procedures - Part 7 - Drapery	IMO-2010 FTP Code Annex 1 - Fire test procedures - Part 8 - Upholstery
	-	-	PASS back coating	PASS back coating	-	-	-	PASS back coating	PASS back coating	-	PASS back coating	-	PASS back coating